



LEMMY LOVES LEARNING

# BRING *Lemonade Day!*<sup>®</sup> to your school

**Lemonade Day is committed to preparing youth for life through a unique entrepreneurial and experiential program infused with life skills, character development, financial and business literacy, mentorship, and career exploration.**

Entrepreneurs take risks, believing they can realize their dream if they work hard, take responsibility, and act as good stewards of their resources. Today's youth share that optimism but lack the life skills, mentorship, and work experience necessary to be successful. Lemonade Day inspires children in grades K-8 to have an entrepreneurial mindset through the real-world experience of starting their own business – a lemonade stand, the quintessential first business for young entrepreneurs.

The Lemonade Day curriculum offers an innovative hybrid approach to STEM, Social and Emotional Learning, and project-based education. It is designed to help youth build the critical foundational skills necessary to succeed in life. This evidence-based curriculum teaches kids how to set a goal, make a plan, and work the plan – centered around a 3-pronged approach to spend, save and share.



My Lemonade Day is an animated digital experience bringing the Lemonade Day curriculum to life. It is a flexible 4-module, 22-lesson program that can be taught during the school day or after school to students grade K through 8. The Lemonade Day lessons are generally taught in 4-one hour sessions in a four week period.



1. MY GOALS



2. MY PLAN



3. MY STAND



4. MY RESULTS

## STUDENTS WILL...

- Be introduced to an entrepreneurial growth mindset
- Engage and have fun in a project-based experience
- Discover personal strengths and passions
- Receive a comprehensive and thorough understanding of entrepreneurship and advance skill acquisition to launch a real business with selling experience
- Ideate, create a pitch for funding, and run a real business
- Learn goal setting, developing a business plan, financial literacy, marketing, charity
- Solve real-world problems with support from a strong educator and adult mentor

**Together with you, we are creating a new generation of entrepreneurs - future change-makers.**

# LITTLE LEMMY SCHOOL PACKAGES

Select  
**\$250**

- Up to 25 kids
- Ideal for a single classroom or small group



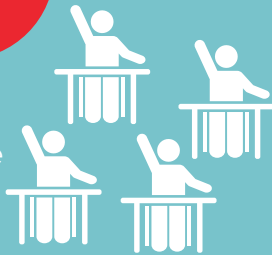
Select  
**\$1,000**

- Up to 125 kids
- Ideal for a youth organization or summer camp



Select  
**\$500**

- Up to 50 kids
- Ideal for multiple classrooms or large youth groups



Select  
**\$2,000**

- Up to 250 kids
- Ideal for a grade level or a school



Select  
**\$750**

- Up to 75 kids
- Ideal for multiple classrooms or large youth groups



Select  
**\$3,500**

- Up to 500 kids
- Ideal for a school district



IF YOUR SCHOOL DOES NOT FIT INTO THE CATEGORIES ABOVE, PLEASE CONTACT US FOR CUSTOM PRICING [HOUSTON@LEMONADEDAY.ORG](mailto:HOUSTON@LEMONADEDAY.ORG)

## ALL PACKAGES INCLUDE:

- Fixed number of My Lemonade Day App seats (digital platform) based on selected package
- Teacher Mentor Guide / Curriki LMS
- Library of training tools and resources (videos/PDFs)

## AVAILABLE FOR PURCHASE:

- Youth Backpack - \$5
- Youth & Adult T-Shirts- \$5
- Youth & Teen Workbooks - \$15 each (in lieu of the MLD app (includes delivery))

In-Person training by a Lemonade Day Houston employee is available upon request for an additional fee.

If interested, please contact:

- 713-893-0990
- [houston@lemonadeday.org](mailto:houston@lemonadeday.org)

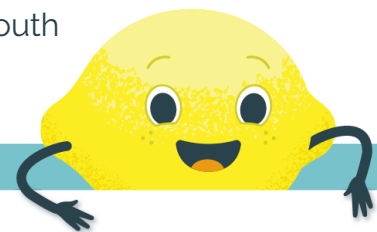


## Value, Benefits and Opportunities:

- Curriculum aligns with TEKS and Common Core Curriculum Standards and The Search Institute's 40 Developmental Assets.
- Mentor/educator Resource Pug and Play Suite: Provides resources and tips on how to teach the lessons via the LMS or a shared link. (see more information attached)
- Curriculum that can accommodate any teaching timeline
- Official Lemonade Day branded stand signage provided
- Summary of results and impact provided upon completion of the program
- Ability to fundraise within the boundaries of the school (for example, a teacher/classroom can fundraise from parents and/or school administrators.
- Opportunity to pair high school students with elementary/middle school students in a collaborative entrepreneurship mentorship training program
- Option to purchase additional training resources and toolkits upon request

## Library of Resources (Videos and Digital Files):

- Lemonade Day Organization Overview
- Lemonade Day Program Overview and Implementation Training
  - Why LD is important to teachers, parents, and students
  - How LD curriculum correlates to Common Core Curriculum Standards and Search Institute's 40 Development Assets
  - Mentor / Teacher Guide / LMS Teacher Resource Suite
  - LD Program Do's and Don'ts
- My Lemonade Day App Overview and Resources
- Peer Support Training – Tips & Tricks from Educators, Youth Leaders and Parents



**If you're interested in expanding your opportunities with Lemonade Day, please contact us for more information.**

**Sign your students up  
for sweet success today!**